

# Wall Mounted Ventilating Fans



15AAQ1



20AQM8 ■ 25AQM7 ■ 30AQM8

## Features

- Quiet operation
- High efficiency for air flow and energy saving
- Ball bearing motor for smooth rotation and excellent durability
- Automatic shutter
- Excellent for small room (Applicable to 15AAQ1)

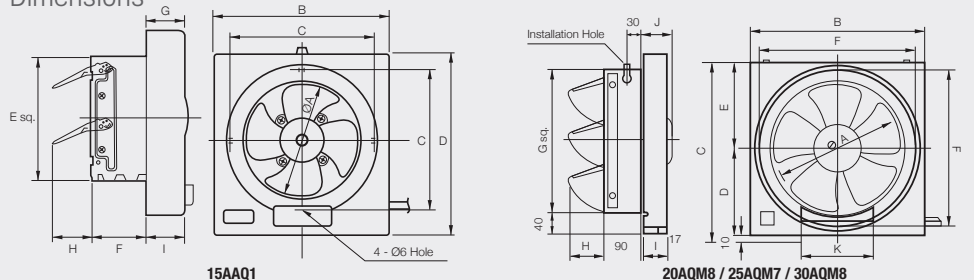
## Specifications

Model	Dimension	RPM	CFM	Motor Rating	Motor W	Motor HP	Motor Type	Noise Level (dB)	Nett Weight (kg)
15AAQ1	6" / 15cm	1480	170	220-240V, 50Hz	15	-	Condenser	31	1.40
20AQM8	8" / 20cm	1109-1301	318		14.9-18.3	0.02	4 Pole Condenser	37	2.30
25AQM7	10" / 25cm	999-1221	530		25.2-30.8	0.03		39	2.60
30AQM8	12" / 30cm	925-1085	727		31.8-38.8	0.05		45	3.00

## Dimensions (mm)

Model	A	B	C	D	E	F	G	H	I	J	K
15AAQ1	150 dia.	240	195	254	170	75	55	54	52	-	-
20AQM8	200 dia.	300	310	160	150	260	240	83	45	68	140
25AQM7	250 dia.	350	360	185	175	310	290	65	40	48	150
30AQM8	300 dia.	400	410	210	200	360	340	81			160

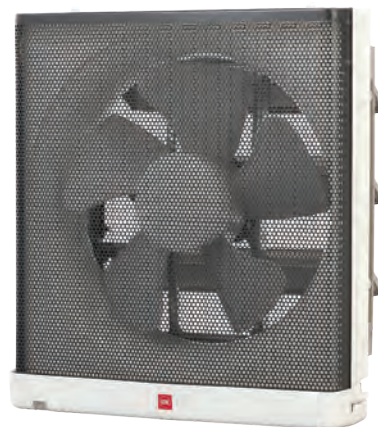
## Dimensions



# Wall Mounted Ventilating Fans



20ALH ■ 25ALH



25AUFA (Raku-Raku™)

## Features

- Curve shape front lower design for better outlook and safety
- Advance aerodynamic blade design minimizes any obstacle against the airflow
- Improved high performance condenser motor with long life bearing
- Energy saving
- Automatic shutter
- Aluminium punching filter with non-stick coating provides easy maintenance (Applicable to 25AUFA)
- Oil deposition. Oil indicator on oil container shows deposited oil in level (Applicable to 25AUFA)

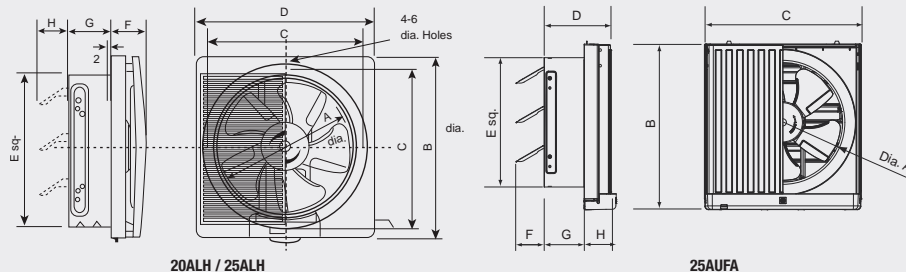
## Specifications

Model	Dimension	RPM	CFM	Motor Rating	Motor W	Motor Type	Noise Level (dB)	Nett Weight (kg)
20ALH	8" / 20cm	1210	321	220-240V, 50Hz	22	Condenser	40	2.20
25ALH	10" / 25cm	1055	491		29		43	2.70
25AUFA	10" / 25cm	1100			34	HP	42	2.80

## Dimensions (mm)

Model	A	B	C	D	E	F	G	H
20ALH	200	306	260	302	240	88	90	80
25ALH	250	356	310	352	290	68	90	63
25AUFA	250	371	352	150	290	70	90	65

## Dimensions



20ALH / 25ALH

25AUFA

# Wall Mounted Ventilating Fans



10EGKA • 15EGKA

## Accessories Included



Fan



Duct Sleeve



Duct Spinner



Pipe Hood

## 10EGKA • 15EGKA

### Features

- Excellent for bathroom use
- Easy installation
- Equipped with full accessories
- Easy cleaning
- Energy saving
- Exhaust moisture and odour, preventing mould

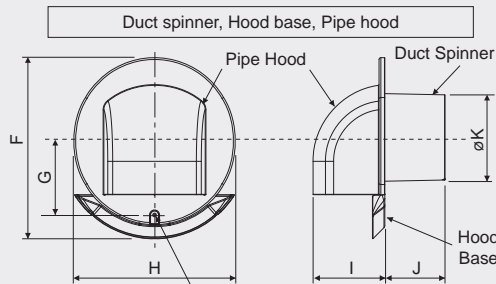
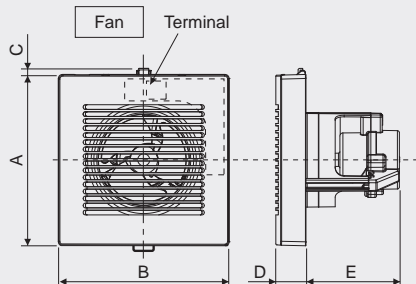
### Specifications

Model	Dimension	RPM	CFM	Motor Rating	Motor W	Motor Type	Noise Level (dB)	Nett Weight (kg)
10EGKA	4" / 10cm	2732	45	220-240V, 50Hz	6.4	Capacitor Start, Run Induction Motor	33	1.20
15EGKA	6" / 15cm	2405	96		6.9		35	1.50

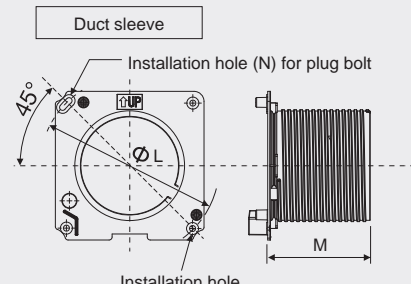
### Dimensions (mm)

Model	A	B	C	D	E	F	G	H	I	J	K	L	M	N	Installation Space
10EGKA	170	170	6	30	93	250	107	220	99	83	ø 120	ø 177	100	6 X 9.3	135 ± 5
15EGKA	220	220				310	142	270	138		ø 165	ø 221		6 X 11.5	180 ± 5

### Dimensions



Installation hole (ø5) for plug bolt



Adaptable wall thickness : 100-150mm