

WIRING ACCESSORIES

Wiring Duct



QTY/ PACK	CAT. NOS	WXH (mm)	LENGHT (m)	COLOUR
100	OPMD 0	25x25	1.7	G
225	OPMD 0.5	15x25	1.7	G
60	EPMD 1.5	33x45	1.7	G
40	EPMD 5	45x65	1.7	G
34	OPMD 6	72x64	1.7	G
100	OPMD 0L	25x25	2.0	G
225	EPMD 0.5L	15x25	2.0	G
80	OPMD 1L	25x45	2.0	G
80	OPMD 1.2L	33x33	2.0	G
60	OPMD 1.5L	33x45	2.0	G
44	OPMD 2L	45x45	2.0	G
56	OPMD 2.2L	50x50	2.0	G
36	OPMD 2.5L	65x45	2.0	G
44	OPMD 3L	33x65	2.0	G
60	OPMD 4L	25x65	2.0	G
40	EPMD 5L	45x65	2.0	G
40	OPMD 5.5L	60x60	2.0	G
36	OPMD 5.7L	65x65	2.0	G
34	OPMD 6L	72x64	2.0	G
42	OPMD 6.5L	33x100	2.0	G
30	OPMD 6.7L	50x100	2.0	G
24	OPMD 7L	70x100	2.0	G
24	OPMD 7.5L	100x75	2.0	G
18	OPMD 8L	100x100	2.0	G
16	OPMD 10L	150x75	2.0	G
12	OPMD 12L	150x100	2.0	G

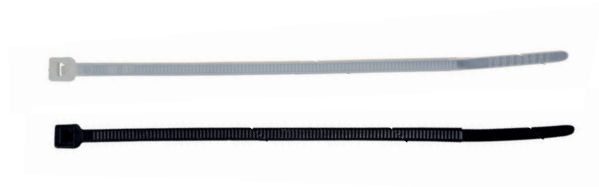
Vinyl Wire End Cup



QTY/ PACK	CAT. NOS	CABLE (mm) ²	COLOR
100	OPEC 1.25	1.5	B/BL/GN/R/Y
100	OPEC 2	2.5	B/BL/GN/R/Y
100	OPEC 3.5	4	B/BL/GN/R/Y
100	OPEC 5.5	6	B/BL/GN/R/Y
100	OPEC 8	10	B/BL/GN/R/Y
100	OPEC 14	16	B/BL/GN/R/Y
100	OPEC 22	25 & 35	B/BL/GN/R/Y
100	OPEC 38	50	B/BL/GN/R/Y
100	OPEC 60	70	B/BL/GN/R/Y
50	OPEC 80	95	B/BL/GN/R/Y
50	OPEC 100	120	B/BL/GN/R/Y
50	OPEC 125	150	B/BL/GN/R/Y
50	OPEC 150	185	B/BL/GN/R/Y
50	OPEC 200	240	B/BL/GN/R/Y
50	OPEC 250	300	B/BL/GN/R/Y
25	OPEC 325	350	B/BL/GN/R/Y
25	OPEC 400	400	B/BL/GN/R/Y
25	OPEC 500	500	B/BL/GN/R/Y
25	OPEC 630	630	B/BL/GN/R/Y

WIRING ACCESSORIES

Nylon Cable Tie



QTY/ PACK	CAT. NOS	LENGTH INCH	LENGTH (mm)	WIDTH (mm)	MAX. BUNDLE DIA (m)	COLOUR
1000	OPCT 100/25	4	100	2.5	25	W/B
1000	OPCT 140/36	5 1/2	140	3.6	35	W/B
1000	OPCT 200/36	8	200	3.6	55	W/B
1000	OPCT 200/48	8	200	4.8	55	W/B
1000	OPCT 250/48	10	250	4.8	74	W/B
1000	OPCT 300/48	12	300	4.8	85	W/B
1000	OPCT 300/76	12	300	7.6	85	W/B
100	OPCT 370/48	14 1/2	370	4.8	102	W/B
100	OPCT 370/76	14 1/2	370	7.6	102	W/B
100	OPCT 430/48	17	430	4.8	125	W/B
100	OPCT 430/90	17	430	9.0	125	W/B
100	OPCT 530/90	21	530	9.0	150	W/B
100	OPCT 720/90	28	720	9.0	185	W/B
100	OPCT 790/90	31	790	9.0	220	W/B
100	OPCT 830/90	32	830	9.0	230	W/B
100	OPCT 880/127	34 1/2	880	12.7	260	W/B
100	OPCT 1030/127	40 1/2	1030	12.7	310	W/B

Cable Tie Mount



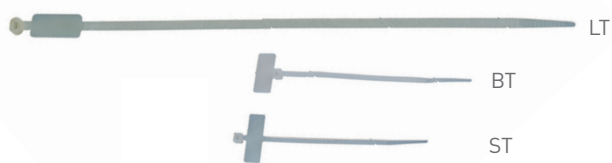
QTY/ PACK	CAT. NOS	W x L (mm)	COLOUR
500	OPCTM19	19 x 19	W/B
500	OPCTM28	28 x 28	W/B

Switch Board Lining



QTY/ PACK	CAT. NOS	TYPE	LENGTH (m)	COLOR
1	OPSL-122S153	Soft	153	B
1	OPSL-122H183	Hard	183	B
1	OPSL-122S183	Soft	183	B
1	OPSL-125W153	Weatherproof	153	B

Nylon Cable Marker Tie



QTY/ PACK	CAT. NOS	LENGTH INCH	LENGTH (mm)	WIDTH (mm)	MAX. BUNDLE DIA (mm)
1000	OPCMT 100/25 ST	4	110	2.5	19
1000	OPCMT 110/25 BT	4 1/2	110	2.5	19
1000	OPCMT 200/25 ST	8	200	2.5	50
1000	OPCMT 200/48 LT	8	200	4.8	50
1000	OPCMT 210/25 BT	8 1/2	210	2.5	50
1000	OPCMT 300/48 LT	12	300	4.8	75

Spiral Band



QTY/ PACK	CAT. NO	WRAPPING RANGE (mm)	COLOUR
60	EPSB 06	10-50	W/B
60	EPSB 08	15-60	W/B
60	EPSB 10	20-60	W/B
60	EPSB 12	20-65	W/B
50	EPSB 15	20-70	W/B
30	EPSB 19	25-100	W/B
20	EPSB 24	30-130	W/B

Length : 10m

Copper Busbar Support



QTY/ PACK	CAT. NOS	SIZE (mm)
250	OPSM 25-M6	25 x M6
100	OPSM 35-M8	35 x M8
100	OPSM 45-M8	45 x M8
50	OPSM 50-M8	50 x M8
25	OPSM 76-M10	76 x M10

Color = W-White, G-Grey, B-Black

WIRING ACCESSORIES

EC Type Cable Markers



COIL	CAT. NOS	MARKING	DIA-RANGE (mm)
1000	OPCMEC1	0-9 A-Z + - /	3.0 - 4.2

FM Type Cable Marker



COIL	CAT. NOS	MARKING	CABLE DIA-mm
500	OPCMFM	0-9 A - Z + - /	3.5 - 7.0

Hot Marker Tubing



QTY/ PACK	CAT. NOS	ROLL (m)	DIAMETER (mm)	COLOUR
1	OPHMT 2020	200	2.0	W
1	OPHMT 2520	200	2.5	W
1	OPHMT 3020	200	3.0	W
1	OPHMT 3220	200	3.2	W/Y
1	OPHMT 3520	200	3.5	W
1	OPHMT 3620	200	3.6	W
1	OPHMT 4020	200	4.0	W
1	OPHMT 4220	200	4.2	W
1	OPHMT 4520	200	4.5	W
1	OPHMT 5020	200	5.0	W
1	OPHMT 5520	200	5.5	W
1	OPHMT 6020	200	6.0	W
1	OPHMT 7010	100	7.0	W
1	OPHMT 8010	100	8.0	W
1	OPHMT 1010	100	10.0	W

* Made to order: Red, Yellow, Green, Blue

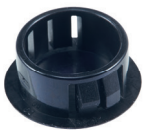
Fm Type Marker Strip



QTY/ PACK	CAT. NOS	DIGIT	DIAMETER WxL (mm)	COLOR
100	IPMS-65	9	9x65	B
100	IPMS-70	10	9x70	B
100	IPMS-100	16	9x100	B
100	IPMS-110	18	9x110	B
100	IPMS-135	23	9x135	B

Hole Snap Bush & Hole Plug

PHP



*Hole Plug				
QTY/ PACK	CAT. NOS	MOUNTING HOLE (mm)	COLOUR	
100	OPHP-8	8	B	
100	OPHP-10	9.5	B	
100	OPHP-13	13.0	B	
100	OPHP-16	16.0	B	
100	OPHP-19	19.0	B	
100	OPHP-22	22.2	B	
100	OPHP-25	25.5	B	
100	OPHP-30	30.5	B	

PSB



*Hole Snap Bush				
QTY/ PACK	CAT. NOS	MOUNTING HOLE (mm)	COLOUR	
100	OPSB-8	8	B	
100	OPSB-10	9.5	B	
100	OPSB-13	13.0	B	
100	OPSB-16	16.0	B	
100	OPSB-19	19.0	B	
100	OPSB-22	22.0	B	
100	OPSB-26	25.4	B	
100	OPSB-30	30.5	B	

Soft Hole Plug



QTY/ PACK	CAT. NOS	LxHxT (mm)	COLOR
100	IPHP 56	56 x 10 x 2.5	B
100	IPHP 96	96 x 10 x 2.5	B

Color = B-Black, W-White, Y-Yellow